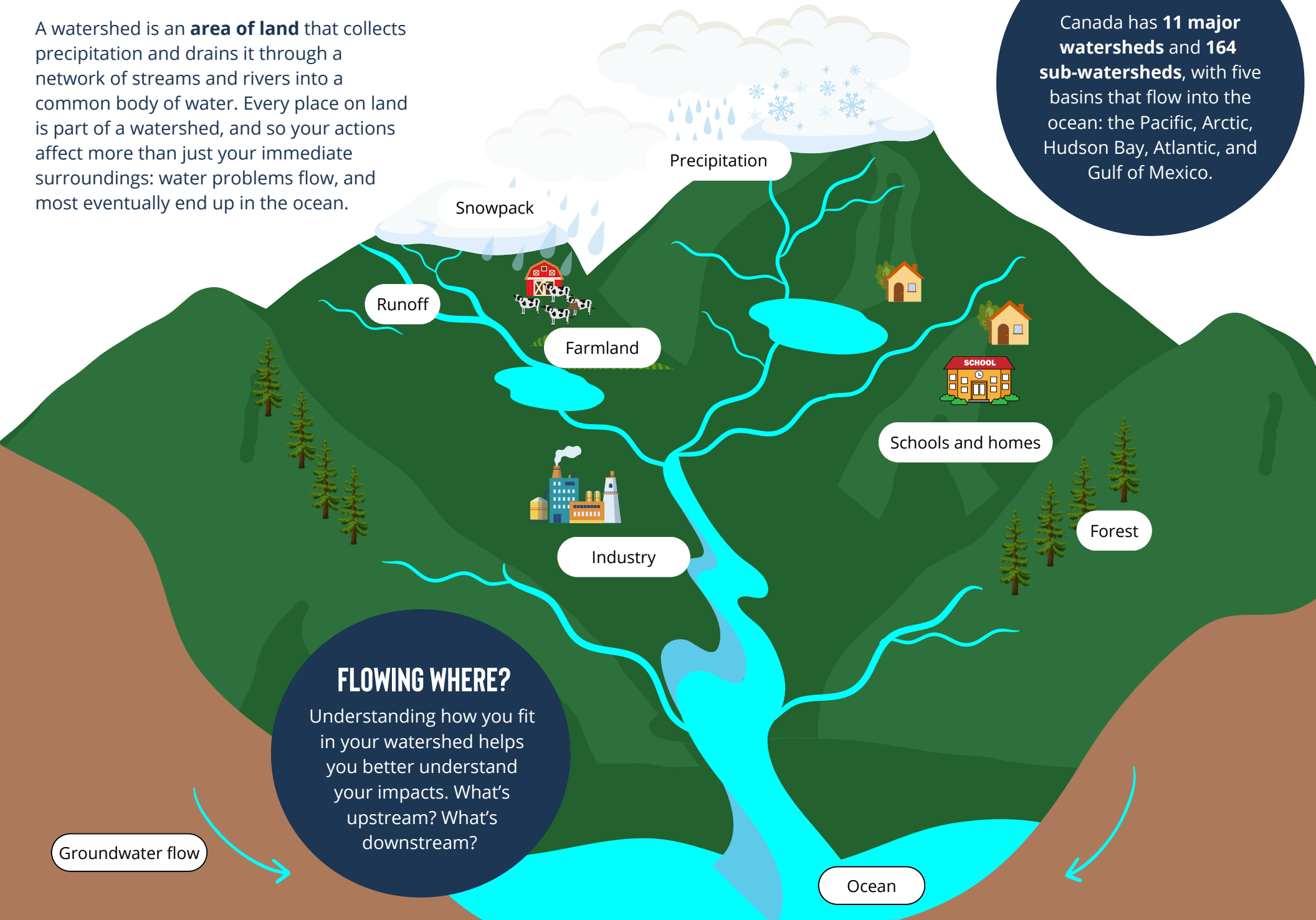


WHAT IS A WATERSHED?

A watershed is an **area of land** that collects precipitation and drains it through a network of streams and rivers into a common body of water. Every place on land is part of a watershed, and so your actions affect more than just your immediate surroundings: water problems flow, and most eventually end up in the ocean.

DID YOU KNOW?

Canada has **11 major watersheds** and **164 sub-watersheds**, with five basins that flow into the ocean: the Pacific, Arctic, Hudson Bay, Atlantic, and Gulf of Mexico.



FLOWING WHERE?

Understanding how you fit in your watershed helps you better understand your impacts. What's upstream? What's downstream?

Groundwater flow

Ocean